

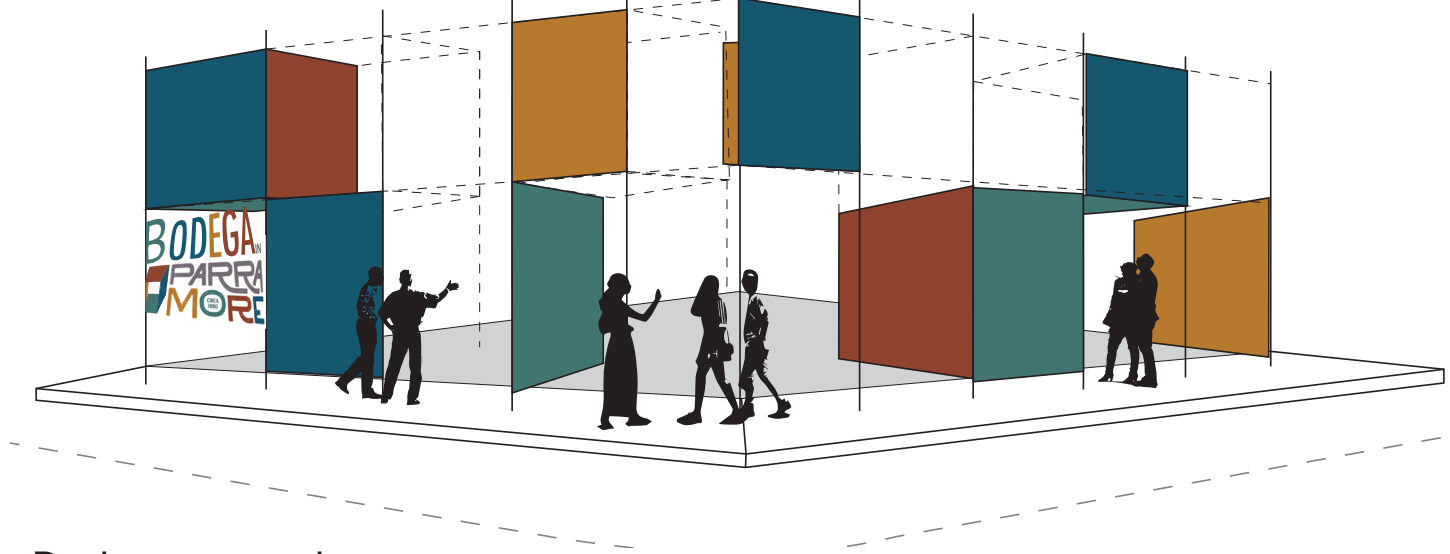
# BODEGA IN PARRA MORE

CIRCA 1880

Team 4: Hossein Mirzajani, Ja'Nai Ferguson, Luiza Heleno



Cultural Significance of a Bodega



Re-interpretation



## Project Narrative

The Parramore community is a historic city that has celebrated Black culture for years. Throughout its existence, the residents of Parramore have had to face many hardships, and through those hardships the city has proven itself to be resilient. Parramore represents a genuine example of a common side effect of urban development in many large cities. An inherently rich community which has been socially segregated and disconnected. Although the City of Orlando has made efforts to introduce facilities into the Parramore community, the residents feel as though their true concerns are not being addressed.

Besides all the necessary support that Parramore receives, as architects our intention is to facilitate the growth and empowerment of the community by providing a sense of place that will enable Parramore to celebrate its existence. Considering the significant difference between the idea of community empowerment and acting as an emergency facilitator, our group plans to address the need for a safe space for communication, recreation, and a connection between their needs and services. One way we can achieve these goals is to introduce a new dynamic medium to the existing condition which will eventually be able to resuscitate underutilized spaces.

This approach will provide new points of interest to serve the residents and improve their quality of life and facilitate financial growth by providing them with work. By utilizing a human-scale approach to the context, we designed a framework with specific programs to showcase the flow of activities and the level of applicability of our solutions. Besides social sustainability, this project aims to be ecologically thoughtful and sustainable through simple materials. As an autonomous Architecture, this project will be considered independently from urban infrastructure supports such as water and electricity and be able to support surrounding neighborhoods during emergency situations.

## Interchangeable Elements

Component	Hard	Soft
Floor	Wood, Rubber, Green, Net, Canopy	
Wall	Wood, Stucco, Green, Net, Canopy	
Roof	Wood, Solar, Green, Net, Canopy	



## Current State

- Food scarcity
- Lack of pride
- Disconnection
- Cleanliness
- Lack of needs services



## The Focus

- Community engagement
- Ownership
- Providing needs
- Bridge the generational gap
- Empower the community
- Giving the residents a voice



## Our Proposal

- User generated design solutions
- Prefabrication
- Modular
- Interchangeable
- Personal



Site Plan

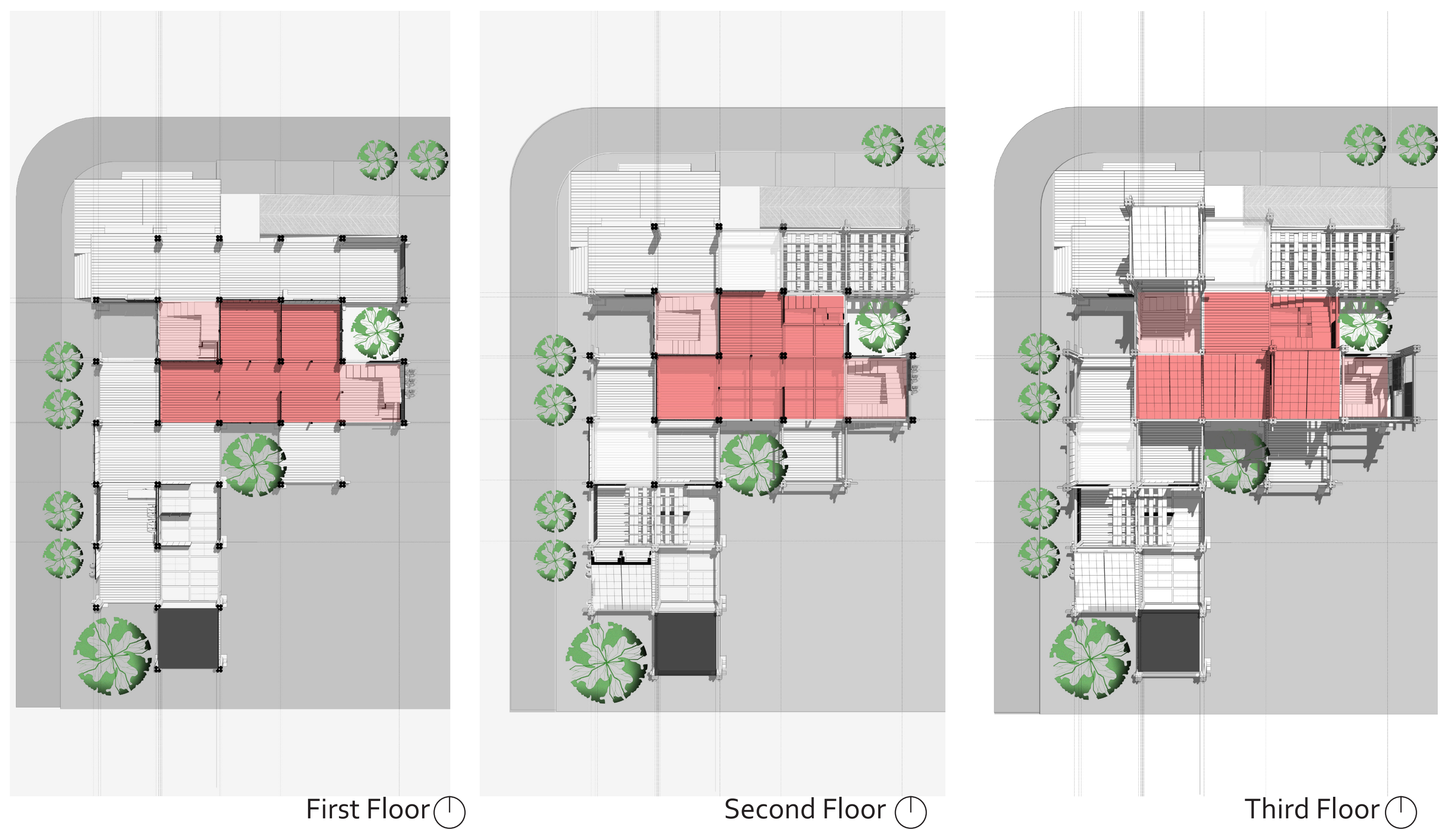
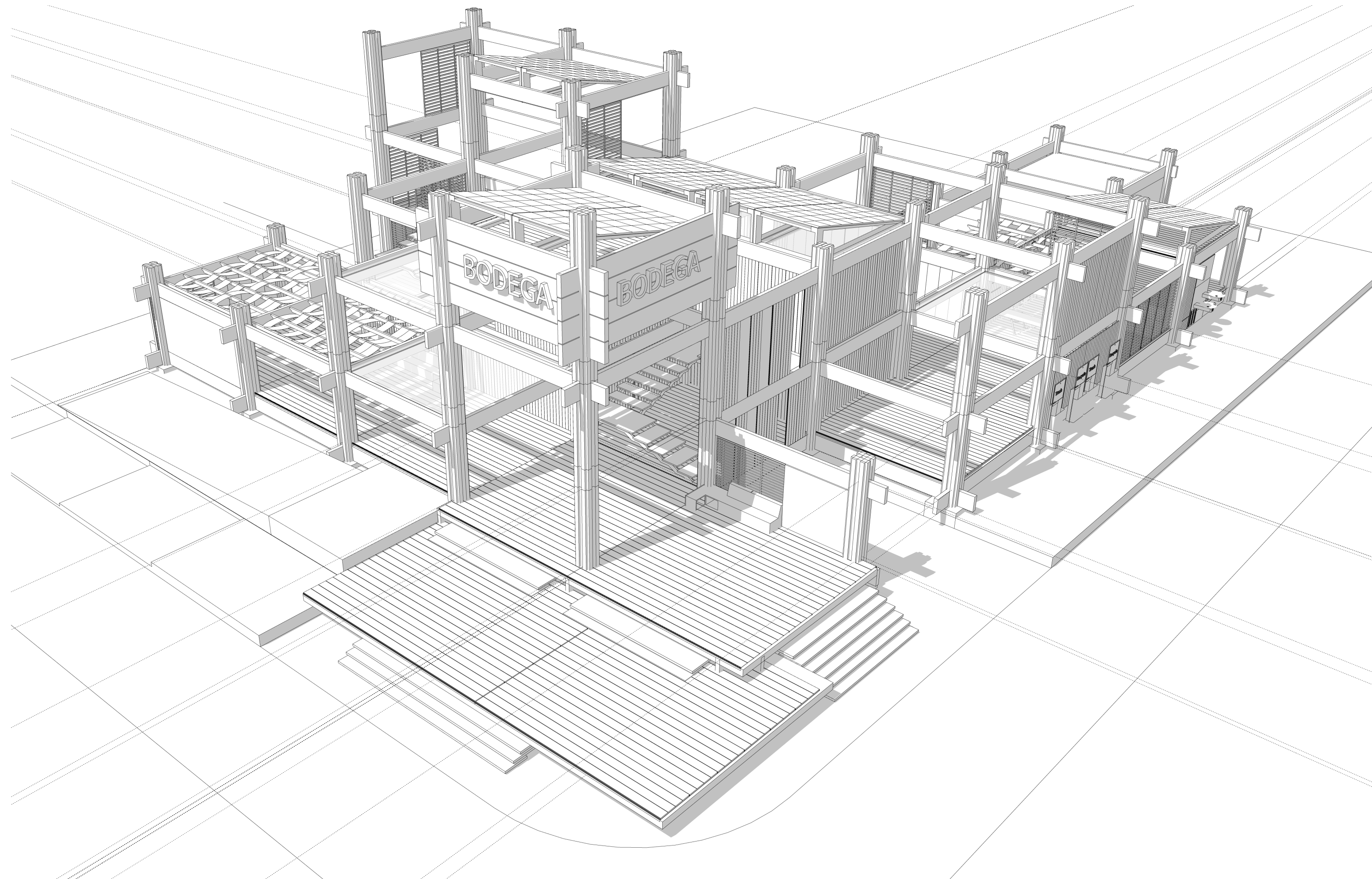
## Proposed Bodega Types

Based off of site locations

- A**
- CORE IN CENTER
  - OPEN FRAME TO ACTIVATE CHURCH ON EAST END
  - OPEN FRAME ON SOUTH SIDE TO ACTIVATE CHURCH AND TREES
  - ACTIVATION FOR STREET ON NORTH AND WEST SIDE
- B**
- CORE IN CENTER
  - THICKER WALL ON EAST SIDE FOR NOISE CANCELLATION
  - OPEN FRAME ON SOUTH SIDES FOR TREES
  - THINNER OPEN WALL ON NORTH SIDE FOR STREET ACTIVATION ON CORNER
- C**
- CORE IN NORTHEAST CORNER
  - THICKER WALL FOR NOISE CANCELLATION ON EAST END
  - OPEN FRAME ON SOUTH, WEST, AND NORTH SIDES TO ACTIVATE STREETS, PHARMACY, AND WIC OFFICE
  - OPEN AREA FOR TREE ON SOUTH END
- D**
- CORE IN NORTHWEST CORNER
  - THICKER WALL ON NORTH AND WEST SIDE
  - OPEN FRAME ON SOUTH AND EAST SIDES FOR TREES
  - ACTIVATION FOR GRIFFIN PARK

## Wall Catalog

Program: Internet + Charging Station	5' x 10'	Material: Wood, Stucco
Program: Food Exchange		Material: Wood, Stucco
Program: Education walls		Material: Stucco
Program: Louver Panel	10' x 10'	Material: Wood
Program: Planter Wall		Material: Green
Program: Historical Preservation		Material: Stucco
Program: Internet + Charging Station	5' x 10'	Material: Wood, Stucco
Program: Free to Draw + Art		Material: Stucco, Wood
Program: Louver Panel		Material: Wood



First Floor

Second Floor

Third Floor

